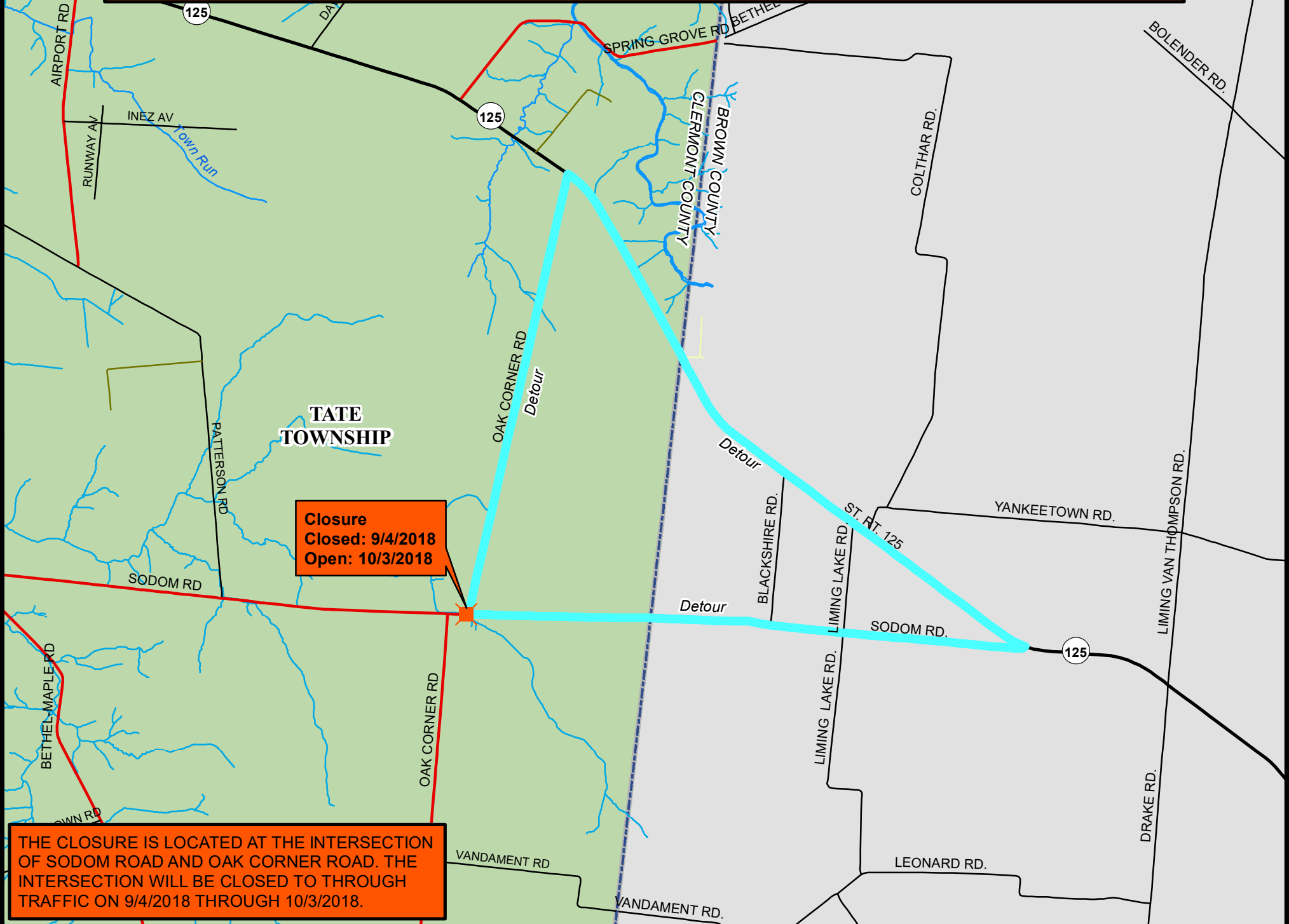


Sodom Road Bridge No. C111-1.37 Replacement Detour Map



Closure
Closed: 9/4/2018
Open: 10/3/2018

THE CLOSURE IS LOCATED AT THE INTERSECTION OF SODOM ROAD AND OAK CORNER ROAD. THE INTERSECTION WILL BE CLOSED TO THROUGH TRAFFIC ON 9/4/2018 THROUGH 10/3/2018.